

**Phytochemical Investigations and Pharmacological Evaluation of *Mimusops elengi* L  
Bark for Hepatoprotective Activity**

Neelesh Anuragi<sup>1</sup>  
Jeetendra Kushwaha<sup>2</sup>  
Deependra Singh<sup>3</sup>  
Deepa Singh Chouhan<sup>4</sup>  
Keerti Ahirwar<sup>5</sup>

Shri Krishna University, Chhatarpur (M.P.)

**ABSTRACT**

Bark of *Mimusops elengi* L is an evergreen tree, belonging to family Sapotaceae, cultivated in gardens as an ornamental tree. It is traditionally used as cardiogenic, anthelmintic, in the treatment of leprosy and various ailments. The present study includes phytochemical and pharmacological evaluation of bark. Here the powdered bark was subjected to successive soxhlet extraction using different solvents of increasing polarity. The successive methanol and aqueous extracts were subjected for *In-vivo* hepatoprotective evaluation. The methanolic extract was found more effective. So it was further subjected for preliminary phytochemical and chromatographic examination. Attempt was made to isolate the compounds using isocratic elution technique. The compounds isolated were characterized by UV, FT-IR, <sup>1</sup>H-NMR, <sup>13</sup>C-NMR and Mass spectroscopy.

**KEYWORDS**

Elution, Herbalism, Herb, Metabolites, Diagnostic.

**INTRODUCTION**

Herbal medicine, sometimes referred to as Herbalism or Botanical Medicine, is the use of herbs for their therapeutic or medicinal value. An herb is a plant or plant part valued for its medicinal, aromatic or savory qualities. Plants produce a variety of chemical substances that act upon the human body.

Many plants biosynthesize chemical substances that are useful for the maintenance of health in humans and other animals. Many are secondary metabolites, of which at least 12,000 have been isolated—a number estimated to be less than 10% of the total. In many cases these substances (particularly the alkaloids) serve as plant defense mechanisms against insects and herbivores. Many of the herbs and species used by humans as season as food yields useful medicinal compounds.

Medicinal herb is considered to be a chemical factory as it contains multitude of chemical compounds like alkaloids, glycosides, saponins, resins, oleoresins, sesquiterpene lactones and oils

(essential and fixed). Today there is growing interest in chemical composition of plant based medicines. Several bioactive constituents have been isolated and studied for pharmacological activity.

Herbal medicine is the oldest form of health care known to mankind. Herbs had been used by all cultures throughout history. It was an integral part of the development of modern civilization. Much of the medicinal use of plants seems to have been developed through observations of wild animals and by trial and error. As time went on, each tribe added the medicinal power of herbs in their area to its knowledge base. They methodically collected information on herbs and developed well-defined herbal pharmacopoeias. Indeed, well into the 20<sup>th</sup> century much of the pharmacopoeia of scientific medicine was derived from the herbal lore of native peoples. Many drugs commonly used today are of herbal origin. Indeed, about 25% of the prescription drugs dispensed in the United States contain at least one active ingredient derived from plant material. Some are made from plant extracts; others are synthesized to mimic a natural plant compound.<sup>1</sup>

### MATERIAL AND METHODS

#### MORPHOLOGICAL CHARACTERS

Morphology is the study of the form of an object while morphography is the description of that form where the material is known to occur in a particular form. Morphological and organoleptic characters viz. colour, odor, taste, shape and size were observed and evaluated botanically.

#### STUDY OF MICROSCOPICAL CHARACTERS

##### a) Transverse section of the Bark

The microtome section of the bark was taken observed under low and high power magnification of microscope.

##### b) Powder microscopy

The dried bark of *MimusopselengiL*. Were coarsely powdered and boiled with chloral hydrate for 5-10 minutes and then stained with phloroglucinol and HCl in 1:1 ratio, observed under high power (40x), for different diagnostic characters such as, cork cells, crystal fibers, medullary rays with attached fibers and cortex cells with starch grains.

##### c) Proximate Values

The following proximate values were determined for the bark powdered *MimusopselengiL*.

#### EXTRACTIVE VALUES

Extractive values help to determine the amount of soluble constituents in a given amount of medicinal plant material, when extracted with various solvents. The extraction of any crude drug

## SKU PHARMACEUTICAL REVIEW

---

Year-1, Vol-2 "April – June 2024"

with a particular solvent yields a solution containing different phytoconstituents. The composition of these phytoconstituents in that particular solvent depends upon the nature of drug and solvent used. The use of single solvent can also be used by means of providing preliminary information of quality of a particular drug sample.

### ALCOHOL SOLUBLE EXTRACTIVE VALUE

4g of shade-dried *Mimusopselengi*L. bark powder was macerated with 100ml of 95% ethanol in a closed flask, shaking frequently during the first 6hrs and allowed to stand for 18hrs. Thereafter it was filtered rapidly taking precaution against loss of ethanol. Evaporated 25ml of filtrate to dryness in a tared flat bottom shallow dish, dried at 105<sup>0</sup>C and weighed.

### WATER SOLUBLE EXTRACTIVE VALUE

4g of shade-dried *Mimusopselengi*L. bark powder was macerated with 100ml of water in a closed flask, shaking frequently during the first 6hrs and allowed to stand for 18hrs. Thereafter it was filtered rapidly. Evaporated 25ml of filtrate to dryness in a tared flat bottom shallow dish, dried at 105<sup>0</sup>C and weighed. Percentage of extractive values was calculated with reference to the shade-dried bark powder.

### PETROLEUM ETHER SOLUBLE EXTRACTIVE VALUE

4g of shade-dried *Mimusopselengi*L. bark powder was macerated with 100ml of Petroleum ether in a closed flask, shaking frequently during the first 6hrs and allowed to stand for 18hrs. Thereafter it was filtered rapidly. Evaporate 25ml of filtrate to dryness in a tarred flat bottom shallow dish, dried at 105<sup>0</sup>C and weighed. Percentage of extractive values was calculated with reference to the shade-dried bark powder.

### MOISTURE CONTENT

An accurately weighed quantity of the shade-dried coarsely powdered *Mimusopselengi*L. bark powder was taken in a tared glass bottle and the initial weight was taken. The crude drug was heated at 105<sup>0</sup>C in an oven and weighed. This procedure was repeated till a constant weight was obtained. The moisture content of the sample was calculated as percentage with reference to the shade-dried material.

### ASH VALUES

#### TOTAL ASH

2g of accurately weighed quantity of the shade-dried coarsely powdered bark of *Mimusopselengi*L. was taken in a tared silica crucible and incinerated at a temperature not exceeding 450<sup>0</sup>C until free

from carbon, cooled and weighed. The percentage of total ash was calculated with reference to shade-dried bark powder.

### ACID-INSOLUBLE ASH

Total ash obtained was boiled for five minutes with 25 ml of dilute Hydrochloric acid. The insoluble matter was collected on an ash-less filter paper, washed with hot water and ignited, cooled and weighed. The percentage of acid insoluble ash was calculated with reference to shade-dried bark powder.

### WATER-SOLUBLE ASH

Total ash obtained was boiled for five minutes with 25ml of distilled water, cooled and collected the insoluble matter on an ash-less filter paper, washed with hot water and ignited for 15 minutes at temperature not exceeding 450<sup>0</sup>C. Subtracted the weight of the insoluble ash. The percentage of water-soluble ash was calculated with reference to shade dried bark powder.

### SULPHATED ASH

Silica crucible is heated to redness for 10 minutes; cooled and weighed. 1 gram of air-dried bark powder is placed in silica crucible, moistened with sulphuric acid, ignited gently, again moistened with sulphuric acid and ignited at about 800<sup>0</sup>C. Cooled and weighed, once again ignited for 15 minutes and weighed. The percentage of sulphated ash was calculated with reference to air-dried bark powder.

### PHYTO CHEMICAL INVESTIGATIONS

*Mimusopselengi*L. Bark was subjected to following phytochemical investigations:

#### EXTRACTION

##### SUCCESSIVE EXTRACTION

The *Mimusopselengi*L. bark was shade dried at room temperature, pulverized, and 200g of coarse powder each batch was successively extracted with chloroform, methanol and water respectively in increasing order of polarity. The extracts were concentrated under reduced pressure using Rotary flash evaporator and the residues were dried in dessicator over sodium sulfite. After drying, there spective extracts were weighed and percentage yield was calculated. All the extracts were further subjected for preliminary phytochemical investigations by qualitative chemical tests.

#### PRELIMINARY PHYTOCHEMICAL ANALYSIS

All the extracts of *Mimusopselengi*L. bark were subjected to qualitative chemical tests to detect the presence of various phytoconstituents.

## SKU PHARMACEUTICAL REVIEW

---

Year-1, Vol-2 "April – June 2024"

### TESTS FOR CARBOHYDRATES

#### MOLISCH'S TEST

Treat the extract solution with few drops of alcoholic  $\alpha$ -naphthol. Add 0.2 ml of concentrated  $H_2SO_4$  slowly through the sides of the test tube, purple to violet colored ring appears at the junction.

#### BENEDICT'S TEST

Treat the extract solution with few drops of Benedict's reagent (alkaline solution containing cupric citrate complex) and upon boiling on water bath, reddish brown precipitate forms if reducing sugars are present.

#### FEHLING'S TEST

Equal volume of Fehling's A (Copper sulphate in distilled water) and Fehling's B (Potassium tartarate and Sodium hydroxide in distilled water) reagents are mixed along with few drops of extract solution, boiled, a brick red precipitate of cuprous oxide forms, if reducing sugars are present.

#### TOLLEN'S TEST

To 100mg of extract add 2ml of Tollen's reagent, a silver mirror is obtained inside the wall of the test tube, indicates the presence of aldose sugar.

#### BROMINE WATER TEST

It gets decolorized by aldose but not by the ketose, because bromine water oxidizes selectively the aldehyde group to carboxylic group, giving raise to general class of compounds called aldonic acid.

### TESTS FOR PROTEINS AND AMINO ACIDS

#### MILLON'S TEST

Extract solution + 2 ml of Millon's reagent (Mercuric nitrate in nitric acid containing traces of nitrous acid)white precipitate appears, which turns red upon gentle heating.

#### NINHYDRIN TEST

Amino acids and proteins when boiled with 0.2% solution of Ninhydrin (Indane 1, 2, 3-trione hydrate), produces violet color.

### TESTS FOR ALKALOIDS

#### MAYER'S TEST

Potassium mercuric iodide solution. To the extract/sample solution, add few drops of Mayer's reagent, creamy white precipitate is produced.

## SKU PHARMACEUTICAL REVIEW

---

Year-1, Vol-2 "April – June 2024"

### **DRAGENDROFF'S TEST**

Potassium bismuth iodide solution. To the extract/sample solution, add few drops of Dragendroff's reagent, reddish brown precipitate is produced.

### **WAGNER'S TEST**

Solution of Iodine in Potassium Iodide. To the extract/sample solution, add few drops of Wagner's reagent, reddish brown precipitate is produced.

### **HAGER'S TEST**

Saturated solution of Picric acid. To the extract/sample solution, add few drops of Hager's reagent, yellow precipitate is produced.

### **Tests for Tannins**

#### **GELATIN TEST**

Extract solution with 1% gelatin solution containing 10% sodium chloride gives white precipitate.

**Ferric chloride test:** Extract solution gives blue-green color precipitate with  $\text{FeCl}_3$ .

#### **Test for anthraquinone glycosides**

**Modified Borntrager Test:** To the 5 ml of extract add 5 ml of 5% Ferric chloride & 5 ml dil. HCL. Heat for 5 min in boiling water bath, cool, add benzene or any organic solvent. Shake well. Separate organic layer, add equal volume of dil. Ammonia. Ammonical layer shows pinkish red colour.

#### **Test for Steroidal glycosides**

**Kedde's test:** Extract the leaf powder with chloroform, evaporate to dryness and add one drop of 90% of alcohol and 2 drops of 2% 3,5-dinitro benzoic acid (3,5, dinitrobenzene carboxylic acid - Kedde's reagent) in 90% alcohol. Make alkaline with 20% sodium hydroxide solution. A purple color is produced. The color reaction with dinitrobenzoic acid depends upon the presence of an  $\alpha$ ,  $\beta$  unsaturated  $\gamma$ -lactone in the aglycone.

## **PHARMACOLOGICAL SCREENING**

### **I] In vivo Hepatoprotective activity**

- 1) Animal selection**
- 2) Acute toxicity study**
- 3) Extracts used**
- 4) Methods of screening**

**Animal selection:** The experiment was carried out using Wistar Albino mice of either sex weighing between 25-30gm for acute toxicity study and Wistar Albino rats of either sex weighing around 150-200gm were used for the Hepatoprotective activity. The mice and rats were supplied by K.L.E.S's COP, Hubli-31(Annexure No: 10.2). Animals were maintained at normal laboratory conditions and were given standard animal feed.

**Acute Toxicity Studies:** Albino mice of either sex weighing between 20-30gm were used during investigation. The animals were fasted over night. The OECD guideline no-423 fixed dose method was adopted and accordingly a dose of Total alcoholic extract was calculated. As per following the OECD guideline no-423 fixed dose method, the safest dose of the total alcoholic extract is 2000mg/kg body weight. The safe dose was found to be 2000mg/kg body weight; hence 1/10<sup>th</sup> of the dose was taken as effective dose which is found to be 200mg/kg body weight.

**Extractused:** Successive methanol and aqueous extracts of the bark of *Mimusops elengi* L. were screened for hepatoprotective property. The dried methanolic extract & aqueous extract were suspended in distilled water using 1% Tween 80 as an emulsifying agent and were employed to assess hepatoprotective activity. The dose was given orally. Liv-52 syrup was used as positive control [The Himalaya drug company, Makali Bangalore], and carbon tetrachloride (CCl<sub>4</sub>) was used as hepatotoxins to induce hepatotoxicity. [Manufactured by Thomas baker Chemicals Ltd. 4/86, Bharat Mahal, and Marine Drive Mumbai]. The Liv-52 dose taken was 5ml/kg body weight by oral route and carbon tetrachloride [CCl<sub>4</sub>] 1ml/kg body weight by Intra peritoneal route.

**Hepatoprotective activity:** Chronic administration of carbontetrachloride to rats induces severe disturbances of hepatic function together with histologically observable liver disturbances. Hepatoprotective activity was carried out using male Albino rats (150-180gm). The animals are grouped into five of six animals each & maintained on standard diet & water ad libitum.

**Group I:** serve as normal control and received 1% Tween-80 (1ml/kg; p.o) daily for 7 days.

**Group II:** serve as toxic control and received CCl<sub>4</sub>: olive oil (1:1, 2ml/kg of body wt; i.p.) on day 1 and day 7 of the experiment.

**Group III:** Animals treated with standard drug Liv-52 (5ml/kg; p.o) daily for 7 days and received CCl<sub>4</sub>: olive oil (1:1, 2ml/kg of body wt; i.p.) on day 1 and day 7, 30 min after administration of Liv-52.

On the 8<sup>th</sup> day of the experiment, the animals were anaesthetized with mild ether and 1ml blood was collected into the Eppindrof tube by retro-orbital vein puncture. The blood collected in Eppindrof tube was centrifuged to separate serum and used for the estimation of various

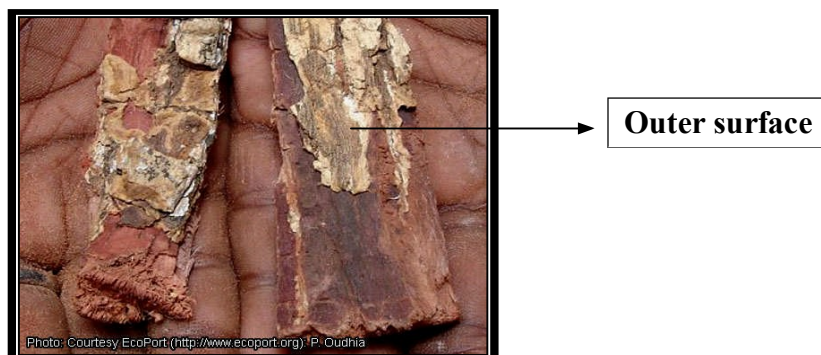
biochemical parameters like SGOT, SGPT, SALP and Bilirubin (total and direct). Livers were excised and fixed in formalin for assessment of Histopathological studies.

**Assessment of liver function**

Biochemical parameters such as Serum Glutamate Pyruvate Transaminase (SGPT), Serum Glutamate Oxaloacetate Transaminase (SGOT), Serum Alkaline Phospatase (SALP) and bilirubin (total & direct) were determined according to the standard procedure prescribed by manufacturer (Transasia Biomedicals Ltd., Daman, India).

**Morphological Characters**

**Figure No. 1 outer surface Bark**

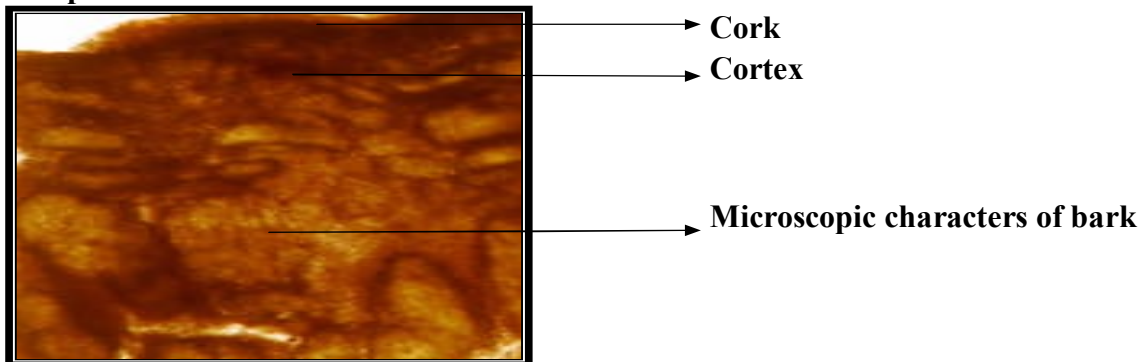


**Table No. 01 Morphological features of Bark**

SL.NO.	FEATURES	OBSERVATION
1.	Outer surface	Grey to black.
2.	Inner surface	Reddish brown.
3.	Taste	Bitter.
4.	Odour	Odourless.
5.	Shape	Quilled.
6.	Fracture	Fibrous.
7.	Size	Length: 10-12cm, Bridth: 3-5cm. Thickness : 0.5-1.5cm



**Microscopic characters**



**Proximate values of *Mimosa elengi* L. bark**

**Table No. 02 Extractive values and Ash values of bark**

S.No.	Parameter	Determined Value % w/w
A	Extractive values	
1	Alcohol soluble extractive value	22.00
2	Water soluble extractive value	28.00
3	Pet ether soluble extractive value	1.00
B	Moisture content	12.75
C	Ash Values	
1	Total ash	6.5
2	Water soluble ash	1.00
3	Acid insoluble ash	1.5
4	Sulphated ash	4.5

**PHYTOCHEMICAL INVESTIGATIONS**

**Table No: 03 Percentage yield and physical characteristics of various extracts of *Mimosa elengi* L. bark**

Extract	% Dry wt in gms.	Colour	Odour	Consistency
Chloroform	2.85	Brownish black	Characteristic	Sticky mass
Methanol	23.9	Brown	Characteristic	Powder
Aqueous	3.35	Reddish brown	Characteristic	Powder

Methanolic extract was further fractionated with ethyl acetate

**Table No. 04 Results of Ethyl acetate fraction**

Fraction	% Dry wt in gms.	Colour	Odour	Consistency
Ethyl acetate	4.00	Reddish brown	Characteristic	Powder

## SKU PHARMACEUTICAL REVIEW

Year-1, Vol-2 "April – June 2024"

**Table No. 05 Preliminary phytochemical tests of various extracts of *Mimusops elengi* L. Bark**

Test	Successive Extraction			
	CHCl <sub>3</sub>	MeOH	AQ	EA
Alkaloids	+ve	--ve	--ve	--ve
Steroids	+ve	--ve	--ve	--ve
Carbohydrates	--ve	--ve	--ve	--ve
Phenolic compounds	--ve	+ve	+ve	--ve
Flavonoids	--ve	+ve	--ve	+ve
Glycoside	--ve	--ve	--ve	--ve
Triterpenoid	+ve	--ve	--ve	--ve
Tannins	--ve	+ve	+ve	+ve

**Table No: 6 Estimation of Cyanidin in *Mimusops elengi* L. Bark**

S.No.	Sample	Absorbance at 530nm
1	Ethyl acetate fraction	0.635
2	Methanol extract	0.404

### PHARMACOLOGICAL INVESTIGATIONS

**Table No: 07 Effect of Methanol and Aqueous extracts on SGPT levels in hepatotoxic rats**

Animals	Normal	CCl <sub>4</sub>	Standard	Methanol	Aqueous
1	47.42	164.42	68.15	78.65	125.43
2	50.12	154.35	84.35	94.16	122.41
3	53.46	146.32	61.35	80.46	112.41
4	48.16	156.35	60.43	74.31	126.48
5	54.68	134.32	57.64	62.46	135.31
6	55.12	164.56	75.12	58.46	125.24
Mean	51.49	153.4	67.84***	74.75***	124.5**
SEM	3.369	11.57	10.26	12.97	7.385
SD	1.376	4.725	4.190	5.295	3.015

### RESULTS AND DISCUSSIONS

Present research includes Pharmacognostic, Phytochemical and Hepatoprotective investigations of the bark of *Mimusops elengi* L.

### Pharmacognostic Contributions

The bark was found to be black to reddish brown in color, odourless, single quilled with rough surface. The Transverse section and powder microscopy of the bark revealed the presence of cork, cortex, medullary rays, phloem fibre, fibrous sclereids, crystal fibres, medullary rays with attached fibres and cortex cells containing starch grains.

### Proximate values

Proximate values for the bark of *Mimusopselengi*L. are as follows: Alcohol soluble extractive value (22.00%), Water soluble extractive value (28.00%), Pet ether soluble extractive value (1.00%), Loss on drying (12.75%), Total ash (6.5%), Acid insoluble ash (1.5%), Water soluble ash (1.00%) and Sulphated ash (4.5%). These values are criterion to put the guidelines of identity and purity of crude drug.

### Phytochemical Investigations

Preliminary phytochemical investigations of chloroform, methanol and aqueous extract and ethyl acetate fraction of methanol extract revealed the presence of alkaloids, steroids, triterpenoids, tannins, flavonoids and phenolic compounds. Further, chromatography based separation of ethyl acetate soluble fraction of methanol extract was carried out. The ethyl acetate fraction was found to contain three spots in TLC then an attempt was made to isolate these compounds by column chromatography with isocratic elution.

### Pharmacological Screening

**Acute toxicity study:** Acute toxicity studies were performed according to OECD guidelines of Method no: 423 and dose was fixed as 200 mg/kg b.w. of successive methanol and aqueous extracts.

### Hepatoprotective activity

The successive methanolic and aqueous extracts of bark of *Mimusopselengi*L. were evaluated for Hepatoprotective studies in Wistar Albino rats by CCl<sub>4</sub> induced hepatotoxicity. An increase in levels of SGPT, SGOT, SALP and Bilirubin (Total & Direct) in blood serum was observed. The results indicate that the elevated levels of SGPT, SGOT, SALP and Bilirubin (Total & Direct) in blood serum were significantly reduced in successive methanol and aqueous extracts. The reduction was significant in the following range: successive methanol extract > successive aqueous extract. The Histopathological studies of liver were carried out to support the above activity. The observations were as follows:

Normal group: liver section showed hepatocytes from central vein and portal traid. CCl<sub>4</sub> control group: liver section showed fatty change with lobularnecrosis. Positive control group (Liv-

52): liver section showed foci of necrosis. Binucleate hepatocytes seen with regenerative activity. Successive methanol extract treated group: sections from liver show minimal hepatocytes necrosis. Good number of binucleate regenerating hepatocytes are also seen. Successive aqueous extract treated group: liver section showed dense foci of necrosis. Hepatocytes showing fatty change and few regenerating hepatocytes are also seen. From the above studies it is evident that successive methanolic and aqueous extracts of bark of *Mimusops elengi*L. plays a promising role in the treatment of Liver disease and worth for further investigations for isolation of more bioactive phytoconstituents for the above treatment. The overall pharmacognostic, phytochemical investigations and Hepatoprotective research on bark of *Mimusops elengi* L. exhibited results to conclude as follows:

Morphological evidences to identify and authenticate the drug are as follows.

Microscopy of bark of *Mimusops elengi*L. exhibited prominent histological features like cork, cortex, medullary rays, phloem fibre, fibrous sclereids, cork cells, crystal fibres, medullary rays with attached fibres and cortex cells containing starchgrains.

Preliminary phytochemical investigations of chloroform, methanol, aqueous extracts and ethyl acetate soluble fraction of methanolic extract have revealed the presence of alkaloids, steroids, triterpenoids, tannins, flavonoids and phenolic compounds.

The successive methanol and aqueous extracts exhibited more promising hepatoprotective activity at the dose of 200mg/kg body weight which is supported by Histopathology.

### CONCLUSION

The present study was carried out to investigate *Mimusops elengi*L. bark for pharmacognostic, phytochemical and *in vivo* hepatoprotective screening.

### Collection and Extraction

Authenticated plant material was subjected to morphological and microscopical analysis. Shade dried and powdered bark was subjected to successive soxhlet extraction with organic solvents of increasing polarity like chloroform, methanol and water. All the extracts were evaluated by qualitative chemical examination for the presence of important phytoconstituents.

### Evaluation for *in vivo* Hepatoprotective activity

To confirm the Hepatoprotective activity of the drug the biochemical studies was carried out on Albino rats and significant reduction of various enzymes like SGOT, SGPT, ALP and bilirubin levels in blood serum of extract treated groups was observed in the following range: successive methanolic extract group > successive aqueous extract group. The above results were supported further by Histopathological studies, which revealed a significant regeneration of the hepatocytes with normal portal vein. The groups treated with above extracts were compared with CCl<sub>4</sub> group.

### REFERENCES

1. [http://www.holisticoline.com/Herbal-Med/hol\\_herb-intro.htm](http://www.holisticoline.com/Herbal-Med/hol_herb-intro.htm)/11.10am/28-12-2009.
2. [http://www.holisticoline.com/Herbal-Med/hol\\_herb-forms.htm#standardized](http://www.holisticoline.com/Herbal-Med/hol_herb-forms.htm#standardized)/3.30pm/7-1-2010.
3. Harsh Mohan. Textbook of pathology, 5th ed. New Delhi: Jaypee brothers. Medical publishers (p) Ltd; 2000.
4. [www.pharmainfo.net](http://www.pharmainfo.net) /11.50am/18-1-2010.
5. Dr.C.C. Chatterjee, Human Physiology Vol-I. Medical Allied Agency;2004.
6. Cotran RS, Kumar V, Collins T. Pathologic Basis of Disease. 6<sup>th</sup> ed. NewDelhi.
7. Harcourt India Pvt. Ltd, 27 M, Block market, Greater Kailash II; 2001.
8. Vogel HG, Drug Discovery and Evaluation Pharmacological Assays. 2<sup>nd</sup> ed. Springer-Verlag, Heidelberg, (NY); 2002.
9. Subrata De, Ravishankar B, Bhavsar G.C. Plants with Hepatoprotective Activity. Indian Drugs 1993;30(8):355-63.
10. Baheti J.R, Goyal R.K, Shah G.B. Hepatoprotective activity of *Hemidesmus indicus* R. Br. in rats. Ind. J. Exp. Bio. 2006;(44):399-402.
11. Akare S.C, Sahare A.Y, Shende M.A, Bondre A.V, Wanjari A.D. Hepatoprotective activity of *Acacia ferruginea* DC. leaves against carbon tetrachloride induced liver damage in rats. Int. J. Pharm. Tech. Res. 2009;1(3):962-5.
12. Usha K, Mary Kasturi G, Hemalatha P. Hepatoprotective effect of *Hygrophila spinosa* and *Cassia occidentalis* on carbon tetrachloride induced liver damage in experimental rats. Ind. J. Clin. Biochem. 2007;22(2):132-5.
13. Kuldeep Ganju, Brij Bhushan Tiwari, Goswami R.B, Pathak A.K. Hepatoprotective activity of tuberous roots of *Gloriosa superba*. Ind. J. Nat. Prod. 2007;23(4):8-11.
14. Kumar E.P, Till Olickal, Vadivelan R, Subburaju T, Suresh B. Hepatoprotective activity of aqueous root extract of *Tylophora indica*. Ind. J. Nat. Prod. 2008; 24(1):29- 32.
15. Katewa SS, Arora A. Hepatoprotective effect of certain ethnomedical plants from Aravalli Hills of Rajasthan. Indian Drugs 2001;38(6):332-5.
16. Aleck Yang T.Y. The family Sapotaceae in Taiwan. Taiwania 1998;45(3):193.
17. Kirtikar KR, Basu BD. Indian Medicinal Plants. 2nd ed. Vol-II. International book distribution; India:1995.
18. <http://plants.usda.gov/java/Mimusops+elengi>/1.30pm/24-1-2010.
19. Yoganarasimhan S.N. Medicinal Plants of India Vol-I. Srinivasan for Interline Publishing Pvt. Ltd, Bangalore;1994.
20. Magadi GR Botanical and Vernacular Names of South Indian Medicinal Plants. Bangalore: Divyachandra prakashan; 2001.